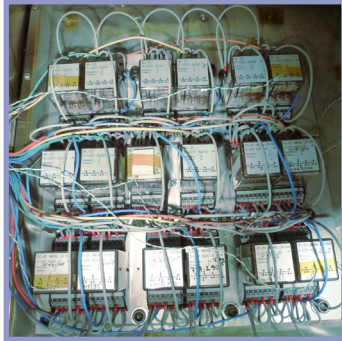


SYSTEM LEVEL RELIABILITY TEST SERVICE

- CLIMATE TESTS
- TEMPERATURE CYCLING
- MECHANICAL SHOCK TESTS
- MECHANICAL VIBRATION TEST
- CORROSION TEST
- HALT

SYSTEM LEVEL RELIABILITY TEST SERVICE



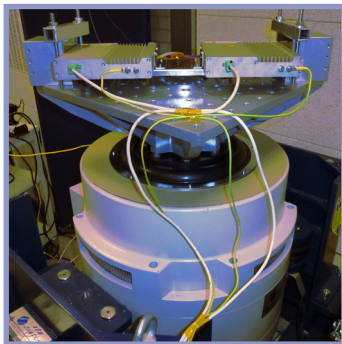
CLIMATE TESTS

- Several ESPEC Climate Test systems available
- Temperature range: -40°C / +150 °C
- Humidity range: +40% / +95% RH
- According to all major international standards and customer specific requirements
- In compliance with EN ISO/ISO 17025 accreditation (*)
- Central Monitoring System (CMS)



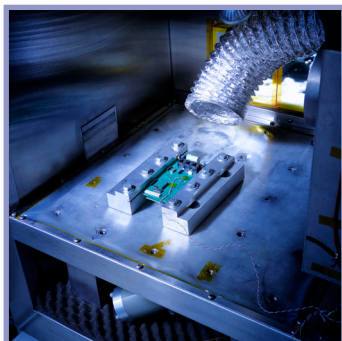
TEMPERATURE CYCLING TESTS

- Several ESPEC Temperature Cycling Test systems available
- Temperature range: -70°C / +275 °C
- According to all major international standards and customer specific requirements
- In compliance with EN ISO/ISO 17025 accreditation (*)
- Central Monitoring System (CMS)



MECHANICAL TESTS

- In-house custom design and manufacturing of test fixturing
- Lansmont M23 Shock tester
 - Shock level: Max 10.000 G
 - Pulse shape: Half Sine / Trapezium
- Electro Dynamic Shaker (ETS Solutions M124/GT600M)
 - Frequency range: DC – 4000Hz
 - Sine acceleration: 100g and displacement: 51mm
 - Sine force: 10.000N/1.000kgf



OTHER SYSTEM LEVEL TESTS

- Corrosion test:
 - VLM Salt Mist Test system, 600 liter test area
 - Humidity range: 95 % to 98%
 - According to all major international standards and customer specific requirements
- HALT test:
 - Locate weak spots in your prototype within a few days
 - Temperature range: -100°C / +200°C, max 60 K/min
 - Acceleration: Max 45 Grms

(*) For our EN ISO/IEC 17025 accreditation scope please check our website or www.rva.nl (L388).